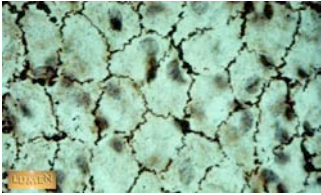
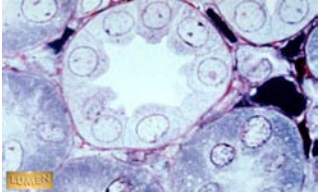


Epithelial Tissue Review

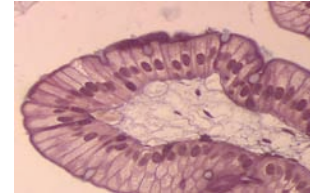


Simple Squamous E.T.
(mesothelium)

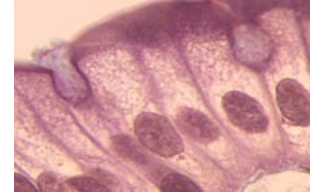


Simple Cuboidal E.T.

Histo-Review

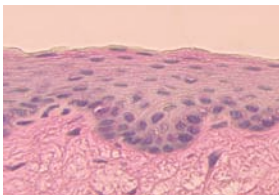


Simple Columnar E.T.

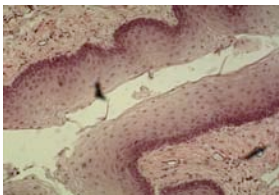


Simple Columnar E.T.
(with goblet cells)

More Histo

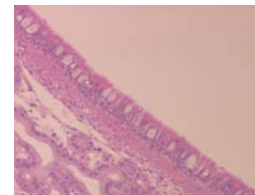


Stratified Squamous E.T.
(high magnification)

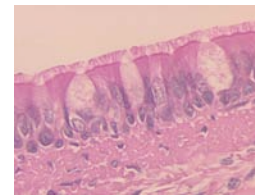


Stratified Squamous E.T.
(low magnification)
(Esophagus)

Histo. Review

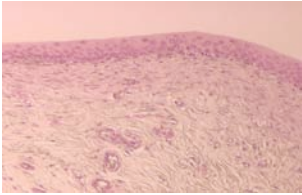


Pseudostratified
Ciliated Columnar E.T.
(low magnification)

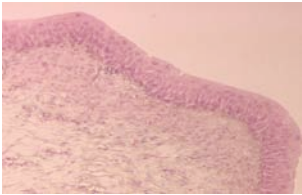


Pseudostratified
Ciliated Columnar E.T.
(showing cilia) and
(goblet cell)

E.T. phone home

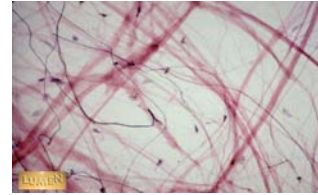


Transitional E.T.
(urinary bladder)
(distented)

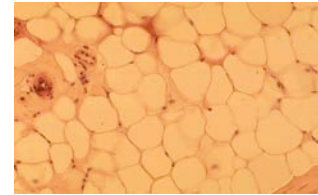


Transitional E.T.
(urinary bladder)
(relaxed)

Connective Tissue Review

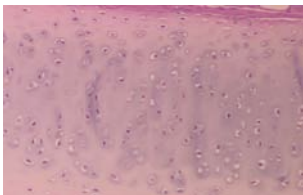


Areolar C.T.

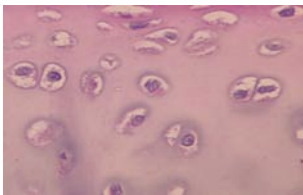


Adipose C.T.

Histo-Review

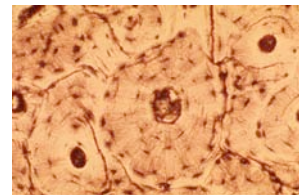


Hyaline Cartilage C.T.



Chondrocyte
(magnified)

Histo-Review

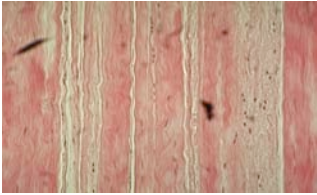


Osseous tissue C.T.

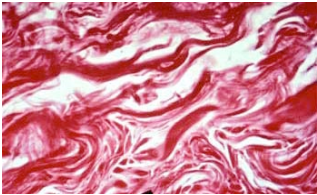


Osseous tissue C.T.
(osteocyte)

More C.T.

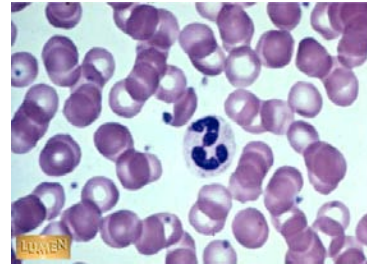


Dense Regular C.T.
(tendon)



Dense Irregular C.T.
(dermis of skin)

End Of Connective Tissue Histo.



Blood C.T.